

ROHS

ITEM: PLLH1.27-40

SPECIFICATIONS

Current Rating:1Amp

Insulation Resistance:1000MΩ Min

Contact Resistance:20mΩ

Withstanding voltage: AC 500V min

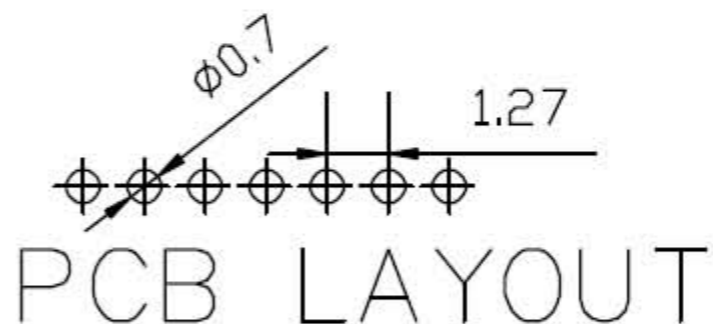
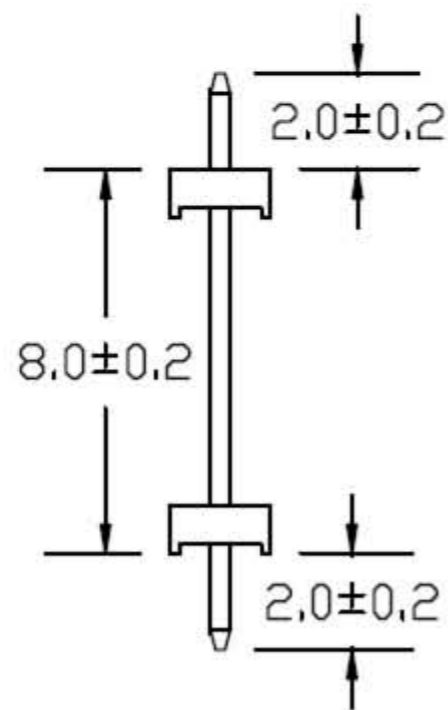
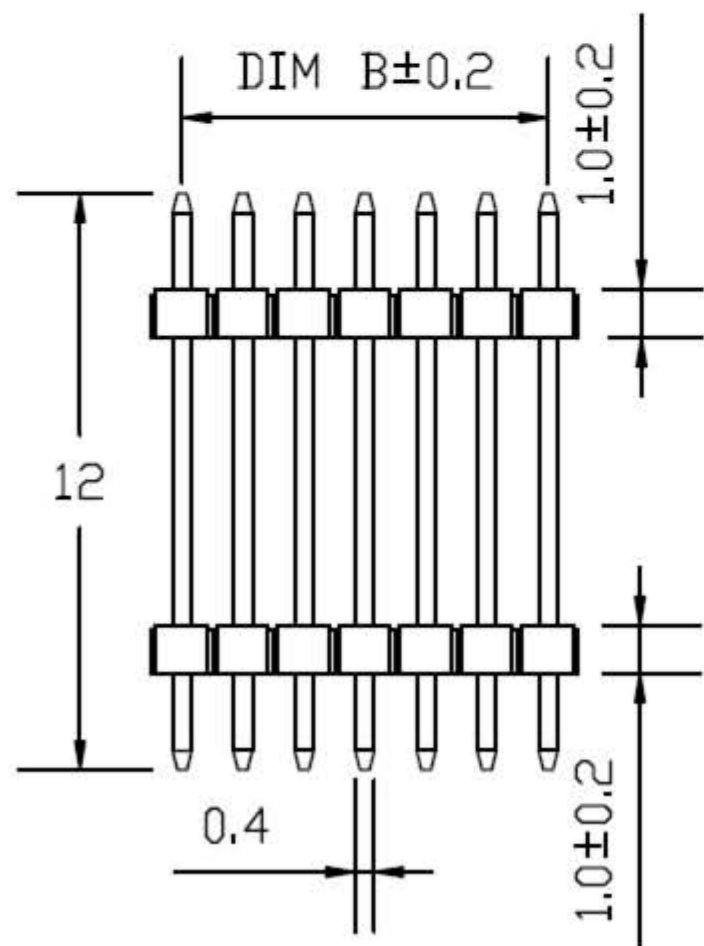
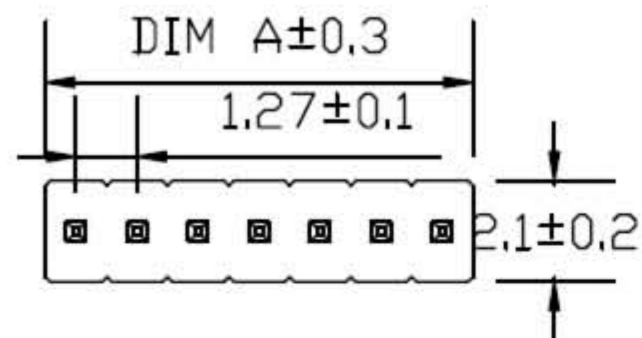
Operating Temperature -40℃ to +105℃

Materials

Contact Material:copper Alloy and GOLD FLASH

Insulation Material:polyester.UL94-0 PA6T

Color:BLACK



pin number	dim A	dim B
1*2 pin	2.54	1.27
1*3 pin	3.81	2.54
1*4 pin	5.08	3.81
1*5 pin	6.35	5.08
1*6 pin	7.62	6.35
1*7 pin	8.89	7.62
1*8 pin	10.16	8.89
1*9 pin	11.43	10.16
1*10 pin	12.7	11.43
1*11 pin	13.97	12.7
1*12 pin	15.24	13.97
1*13 pin	16.51	15.24
1*14 pin	17.78	16.51
1*15 pin	19.05	17.78
1*16 pin	20.32	19.05
1*17 pin	21.59	20.32
1*18 pin	22.86	21.59
1*19 pin	24.13	22.86
1*20 pin	25.4	24.13
1*40 pin	50.8	49.53
1*50 pin	63.5	62.23

RUI CHI